

SPEC SHEET + MEASUREMENTS

PORT AUTHORITY.

Port Authority® Women's Luxe Knit Button Tunic. LK5602

Product photo



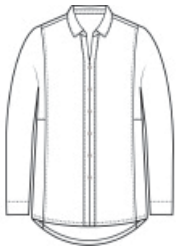
A versatile complement to any wardrobe, this polished tunic offers supreme comfort and a touch of luxury.

- 6.6-ounce, 94/6 rayon/spandex jersey
- Open self-fabric collar with collar stand
- Decorative, non-functioning 6-button placket with faux horn buttons
- Long dolman sleeves
- Front and back seam details
- Self-turned cuffs and hem
- Tunic length, drop tail hem

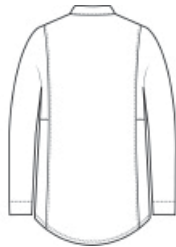
CARE INSTRUCTIONS

Machine Wash Cold With Like Colors. Do Not Use Fabric Softener. Only Non-Chlorine Bleach When Needed. Tumble Dry Low. Remove Promptly. Cool Iron If Necessary.

Sketches



front



back

SPEC SHEET + MEASUREMENTS

PORT AUTHORITY

Port Authority® Women's Luxe Knit Button Tunic. LK5602

PRODUCT MEASUREMENTS

	XS	S	M	L	XL	XXL	3XL	4XL
Size	2	4/6	8/10	12/14	16/18	20/22	24/26	28/30
Body Length at Back	28	28 1/2	29	29 1/2	30	30 1/2	31	31 1/2
Bust	18	19	20	21 1/2	23	24 1/2	26 1/2	28 1/2
Sleeve Length from Center Back	30 1/2	31	31 1/2	32 1/8	32 3/4	33 3/8	33 3/4	34 1/8

Body Length at Back: Measured from high point shoulder to finished hem at back.

Bust: Measured across the chest one inch below armhole when laid flat.

Sleeve Length from Center Back: Measure from Center Back neck to shoulder point to sleeve hem.

SIZE CHARTS

	XS	S	M	L	XL	XXL	3XL	4XL
Size	2	4/6	8/10	12/14	16/18	20/22	24/26	28/30
Bust	32-34	35-36	37-38	39-41	42-44	45-47	48-51	52-55

SPEC SHEET + MEASUREMENTS

PORT AUTHORITY.

Port Authority® Women's Luxe Knit Button Tunic. LK5602

HOW TO MEASURE



BUST

Measure under the arm and around the fullest part of the bust with arms down, keeping tape horizontal.

COLORS



Carolina Blue
PMS 646C



Deep Black
PMS BLACK
C



Purple Mist
PMS 5205C



River Blue
Navy
PMS 7547C